

GETTING INTO

Transport for Ireland

Dublin City Centre

ON AN AVERAGE MORNING



IN 2014

29% TRAVELLED BY BUS

13% TRAVELLED BY RAIL

1% TRAVELLED BY TAXI

33% TRAVELLED BY CAR

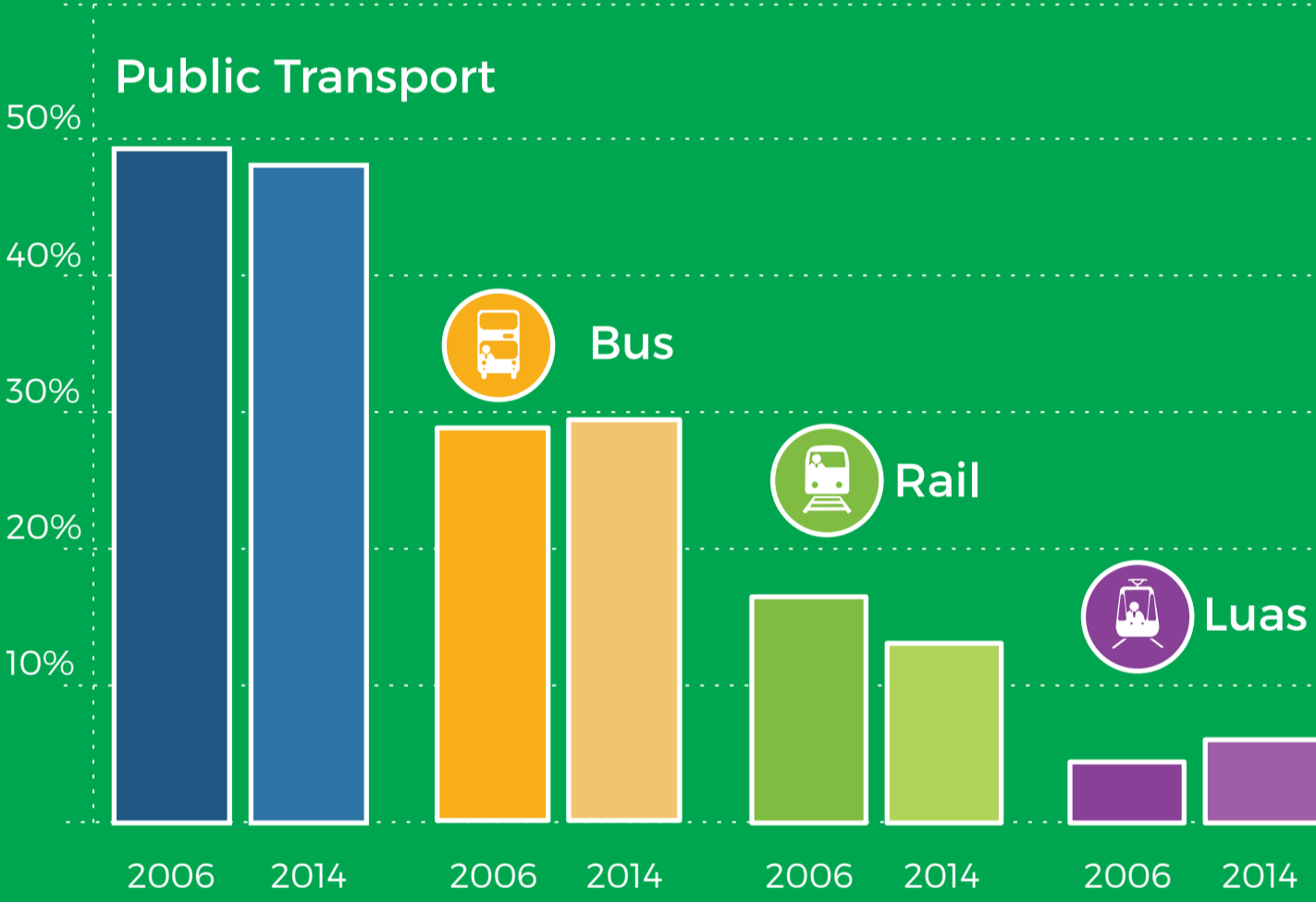
5% CYCLED

10% WALKED

6% TRAVELLED BY LUAS

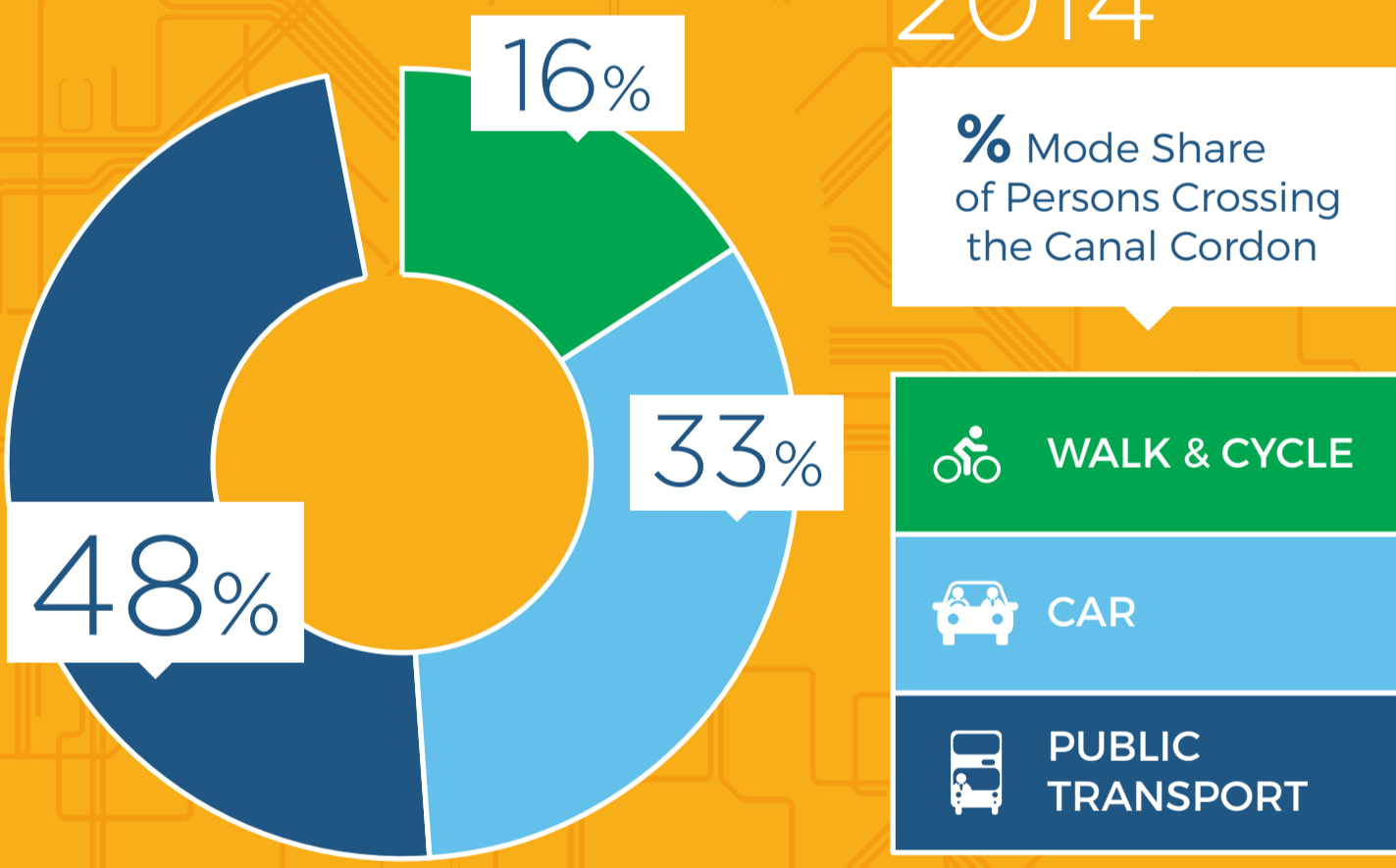
2006 / 2014

% Mode share of persons using public transport crossing the Canal Cordon

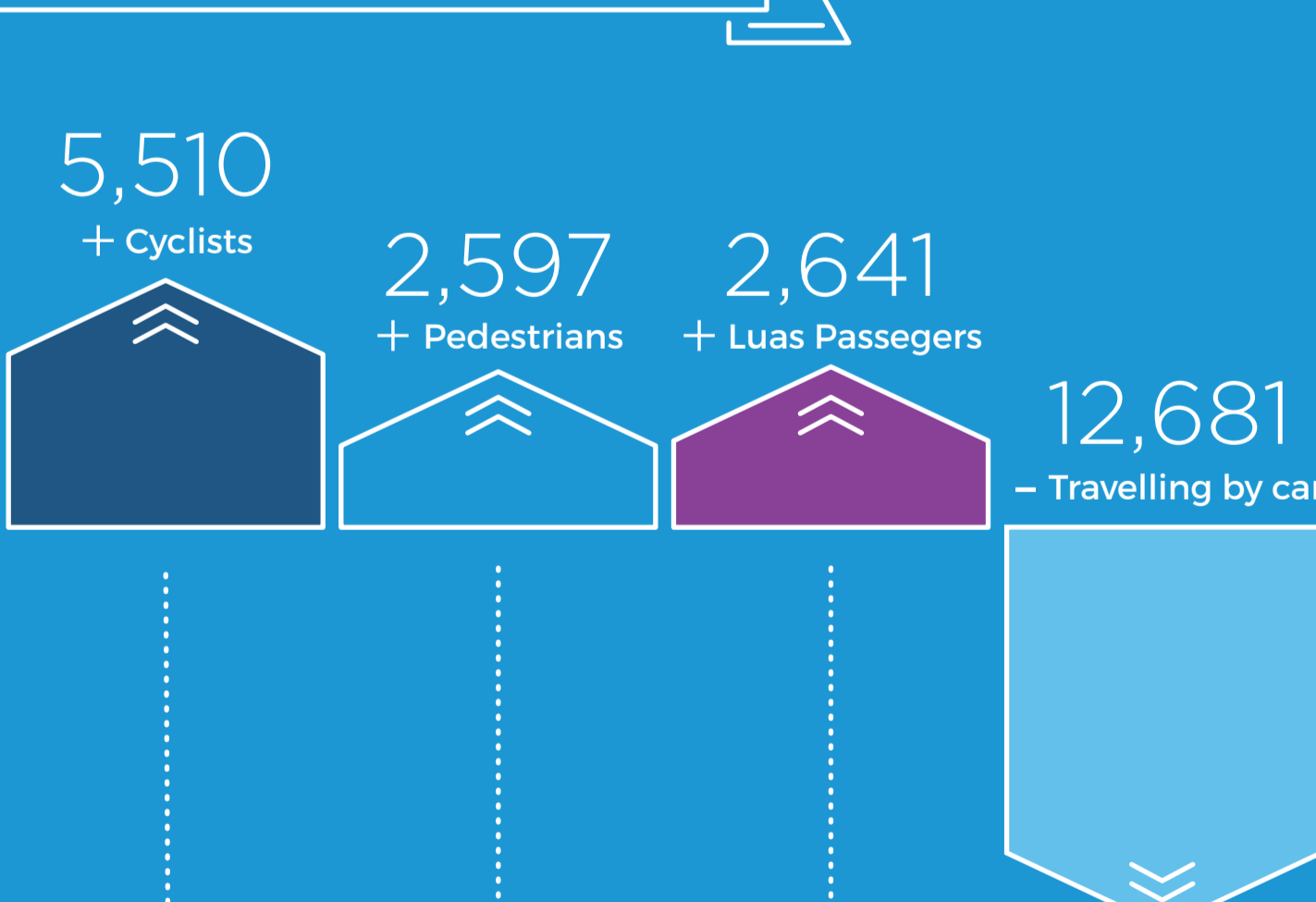


2014

% Mode Share of Persons Crossing the Canal Cordon



TRENDS 2006 TO 2014



CANAL CORDON COUNTS TRENDS IN TRAVEL TO CITY CENTRE

- WHERE** Since 1980, Dublin City Council (DCC) has been conducting traffic counts at 33 locations around the cordon formed by the Royal and Grand Canals.
- WHO & HOW** Dublin City Council Canal Cordon Counts
 I.E. Rail Census
 RPA LUAS Census
 Dublin Bus - Bus Occupancy
- WHEN** Each of the four surveys are undertaken annually during November.

For more information, visit transportforireland.ie

Transport for Ireland

Data retrieved by the National Transport Authority and Dublin City Council | Canal Cordon Report 2006-2014